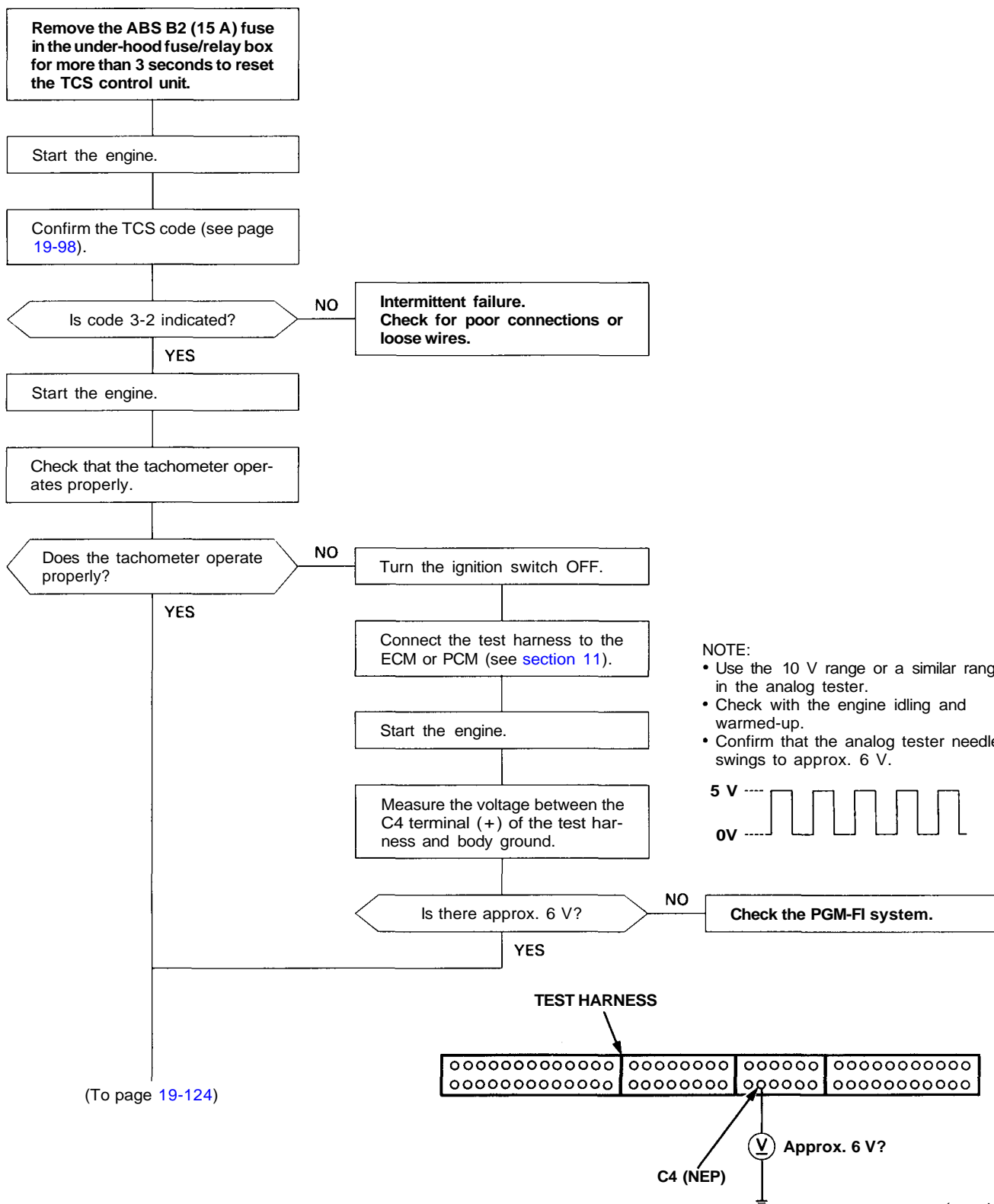




Engine Speed (NEP) Signal

Diagnostic Trouble Code (DTC) 3-2: Engine speed (NEP) signal



(cont'd)

Troubleshooting

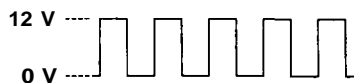
Engine Speed (NEP) Signal (cont'd)

(From page 19-123)

Measure the voltage between the TCS control unit 26P connector terminal 17A (+) and body ground.

NOTE:

- Use the 10 V range or a similar range in the analog tester.
- Check with the engine idling and warmed-up.
- Confirm that the analog tester needle swings to approx. 6 V?



TCS CONTROL UNIT
26P CONNECTOR
(HARNESS SIDE)

1A	2A	3A	4A	5A	6A		8A	9A	10A		12A	13A
14A		16A	17A	18A	19A	20A		22A	23A	24A	25A	26A

View from terminal side

BLU WIRE
(NEP)



Approx. 6 V?

Is there approx. 6 V?

NO

Repair open in the BLU wire between the TCS control unit and ECM or PCM.

YES

- Check for poor connections or loose wires.
- Substitute a known-good TCS control unit and recheck.